

GPS Receivers Software Update Details

Version: Invicta 1.4 GPS Simulation
Release Date: 07/01/15

To connect to a Raven DGPS connection, a "null modem" cable will be required.

- 115-0159-822 10'
- 115-0171-040 3'

If needed, use a USB to Serial adapter (524-0002-063).

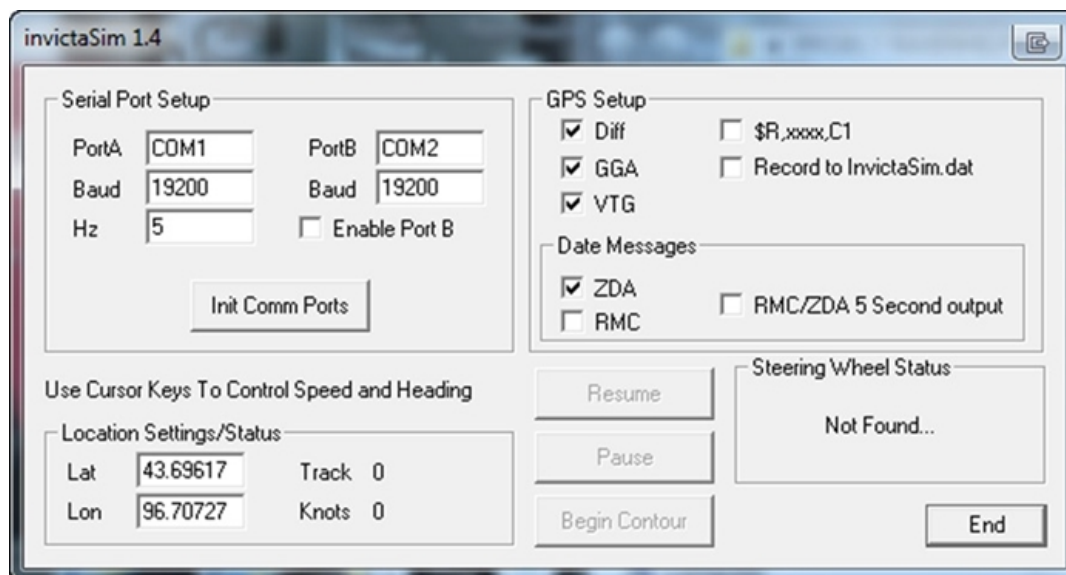
Download and Installation Instructions

1. Download and save to a specified location on your computer.

Note: Usually the C:\ works best, but any drive will work.

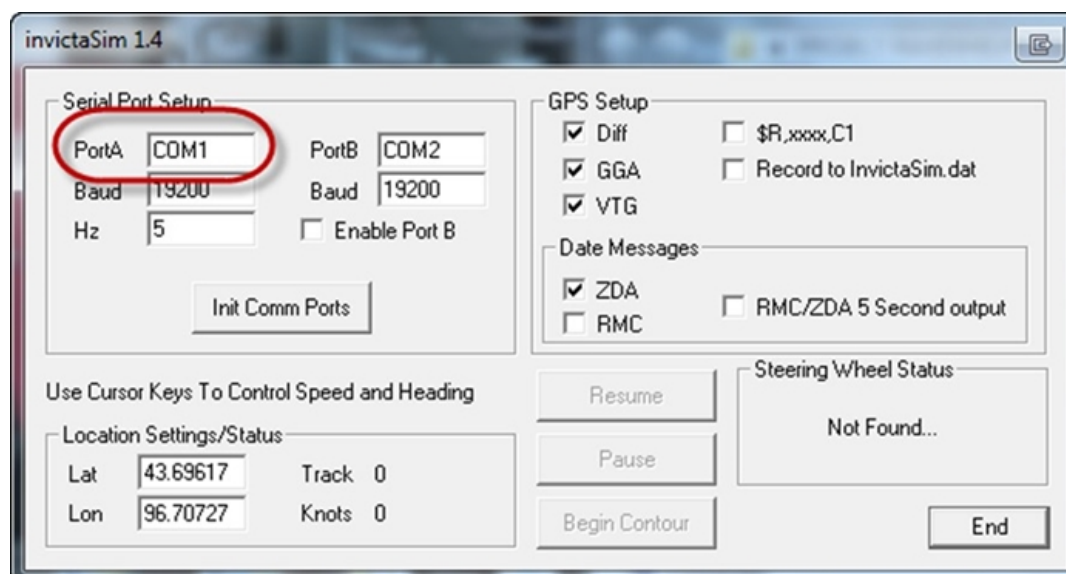
2. Create a shortcut to the desktop for easy access

3. The Invicta Sim program will look like the following image:

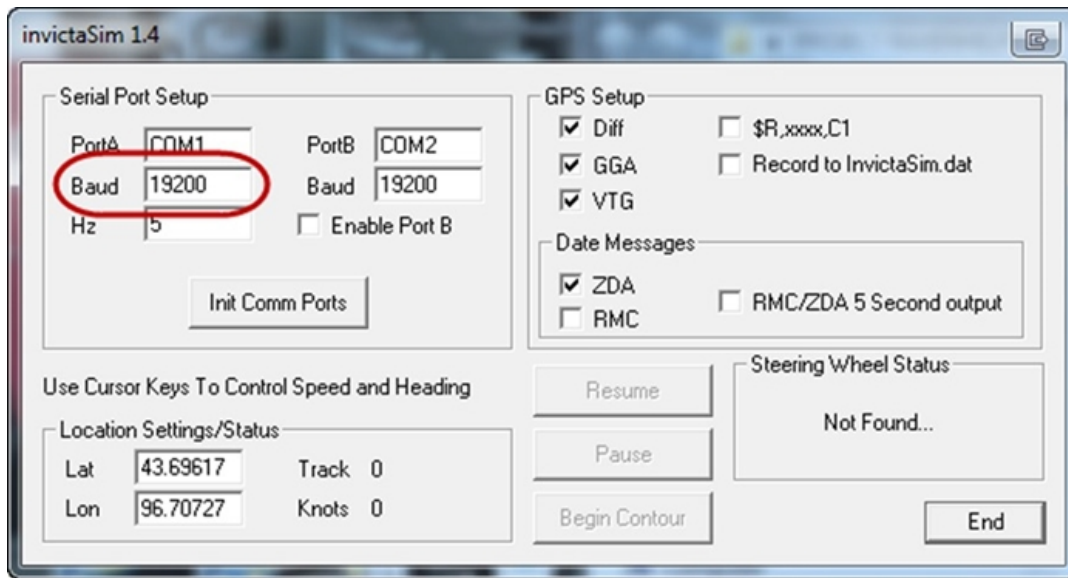


4. Determine which port you have your serial output connected to and change PortA on the serial port setup to match.

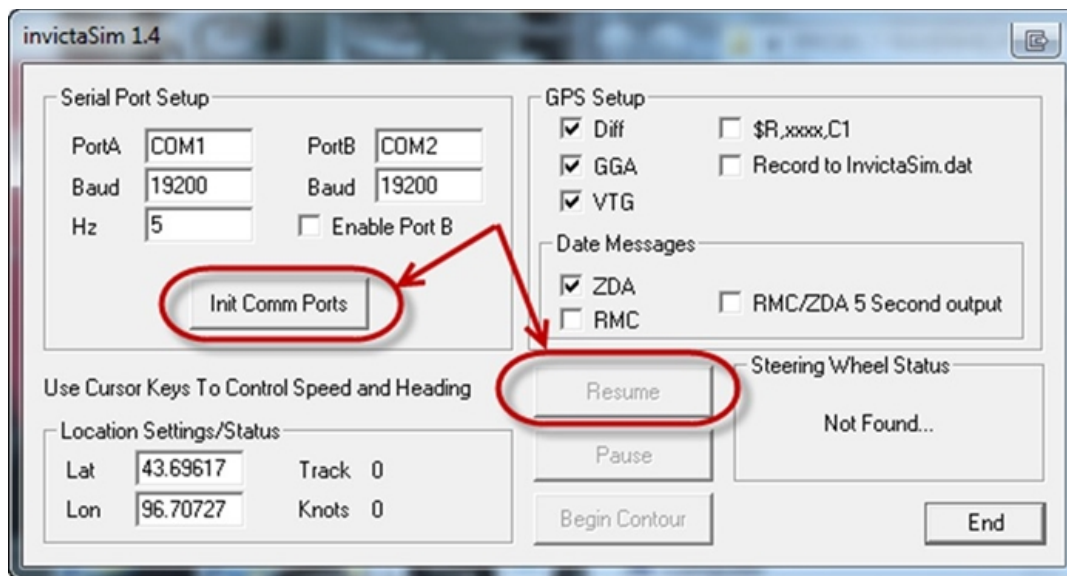
Note: The port output can be determined by going to the computer's device manager and then the ports drop down selection.



The port output can be determined by going to the computer's device manager and then the ports drop down selection.
5. Determine what Baud rate output is needed and type that in.



6. Select **Init Comm Ports** and then select **Resume**.



7. Once you select **Resume**, it will start outputting GPS corrections.

1. A manual latitude and longitude can be typed in on the bottom left side.
2. Manual left/right and forward/stop functions can be performed by the arrow pad on the keyboard.
3. Select **End** to exit Invicta Sim.