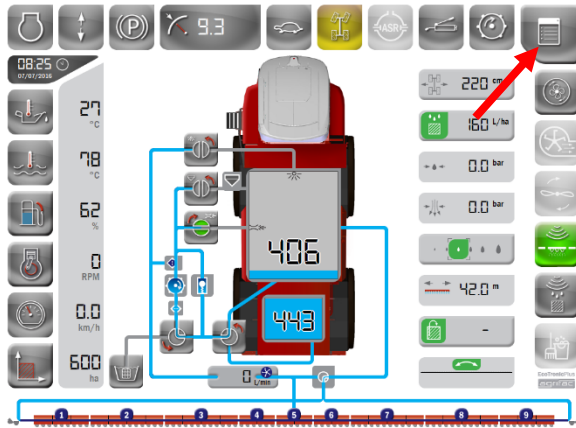


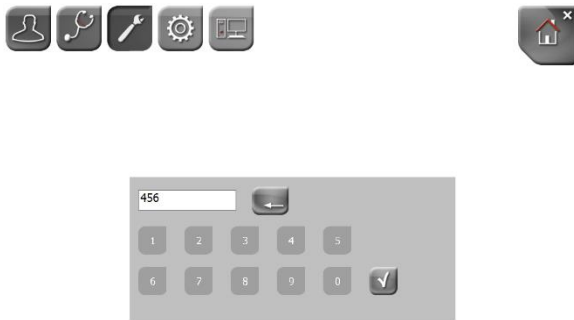
MANUAL SETUP AGRIFAC CONTROLLER



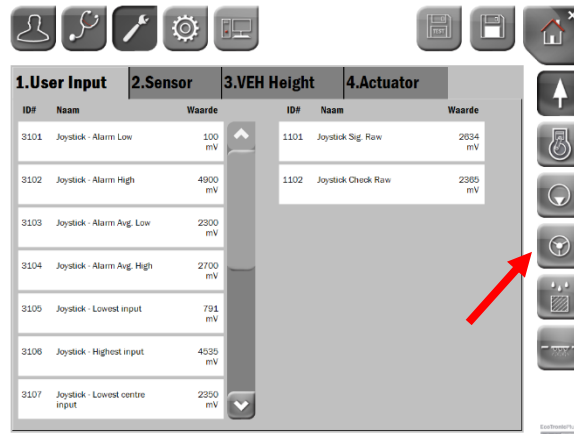
1. Press right top button



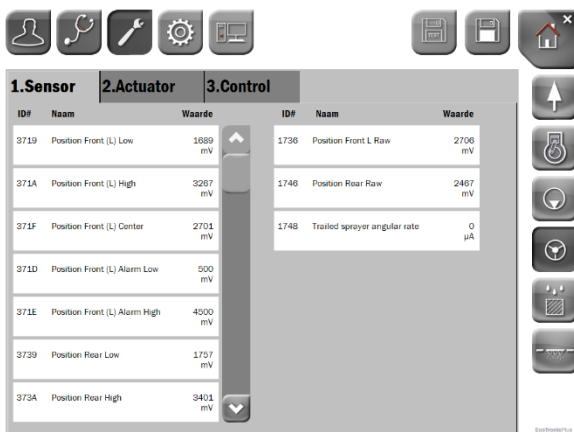
2. Press wrench button



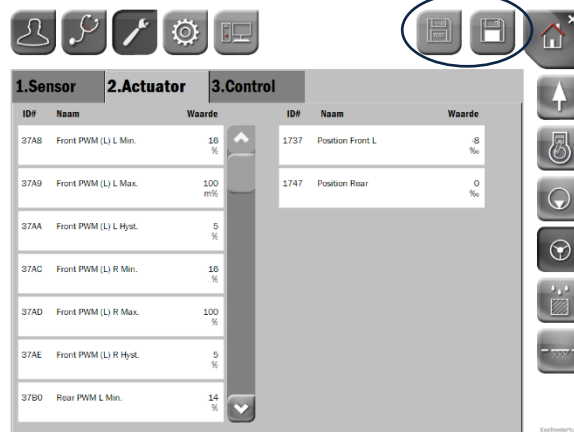
3. Fill in code "456"



4. Press steering wheel on the right side



5. Go to tab "2.Actuator"



6. Adjust the value "37A8 Front PWM (L) L Min." and "37AC Front PWM (L) R Min." after adjusting these settings you can test save them or save them see the blue circle (Test save is temporarily and is lost on next reboot)