



CONFIGURATION MANUAL

(English) (Original version)

Weather sensor

016-8000-103EN Rev. A







Table of contents

Preface.....	4
Disclaimer.....	5
1. Installation.....	7
2. Configuration	8
3. Operation.....	9



Preface

This configuration manual is intended for persons responsible for configuring a weather sensor on a Viper 4+ field computer running SBGuidance software. The manual contains important instructions that should be complied with when commissioning, operating and servicing the SBGuidance system.

This manual has been compiled with the utmost care. SBG Precision Farming assumes no responsibility for any errors or omissions in this document.

Any comments or questions can be sent to service-eu@ravenind.com.

SBG Precision Farming nor any of its suppliers will accept no liability for physical or material damage caused whilst using the SBGuidance system.

The installed SBG system produces less than 70dB (A) noise.

This user guide uses a number of concepts for extra attention to a few things.



Tip:

Provides recommendations on how certain activities can be performed much easier.



Please note!

Indicates certain problems that the user should take note of.



Caution!

Indicates that the machine can be damaged.



Warning!

Indicates a risk of injury.

SBG precision farming

Hoornseweg 22

NL-1775 RB Middenmeer

E-Mail: info@sbg.nl

Web: www.sbg.nl

Phone: +31 (0)227 54 93 00



Disclaimer



Warning!

Always switch off the tractor before installing or repairing hydraulic and electrical components of the SBGuidance system.



Warning!

The safety instructions contained in the manuals of the tractor or implements must be complied with at all times.



Warning!

It is strictly prohibited to use the SBGuidance system on public roads.



Warning!

It is strictly prohibited to leave a driving vehicle unattended whilst the SBGuidance steering system is switched on. The driver is always responsible for the direction and course of the vehicle.



Warning!

To prevent injury or fire, replace defective fuses only with fuses of the same type and amperage.



Warning!

The SBGuidance the operating system is not able to detect and avoid obstacles. If there is an obstacle in your path, you will always need to take action for it to be avoided.



Warning!

Only allow authorized/qualified persons to operate the system. Authorized/qualified persons are defined as: persons who have read and understood the manual, have been given instructions by a product specialist, and who are both physically and mentally fit and able to operate the system.



Warning!

In case of system failure or breakdown switch of the tractor and disconnect the electrical power source to avoid further damage. Contact your dealer for further instructions on how to repair your system.



Warning!

The system contains moving parts! Make sure the immediate environment is clear of people before operating the system.



Warning!

Always wear personal protective equipment when operating/adjusting/repairing the system outside of the tractor cabin.



Caution!

In order to prevent power surges from occurring, always start the machine first, before initiating the SBGuidance control system.



Caution!

Only touch the touch-screen with your finger or by using a special touch-screen stylus/pen. Operating the touch-screen with sharp objects may cause permanent damage to the screen.



Caution!

Always consult your supplier as to which products are best suited first before cleaning the touch-screen with chemicals or alcohol.



Please note!

If the terminal is not used for a long period, better remove the terminal from the tractor and store in a heated environment. This will extend the life span of the electronic components.



Please note!

To prevent theft, it is better to not let the terminal and GPS-antenna unattended in the tractor on the field.



1. Installation

This configuration manual is intended for configuring a weather sensor on a Viper 4+ field computer. A SBG weather sensor and a SBGuidance weather sensor licence is needed.



Please note!

A licence is necessary for using the weather sensor!

Mount the USB connector of the sensor cable in one of the USB ports on the left side of the Viper 4+ terminal. The sensor should be mounted outside the cab. The sensor can be mounted easily on every metal surface with the magnetic clips (Figure 1).

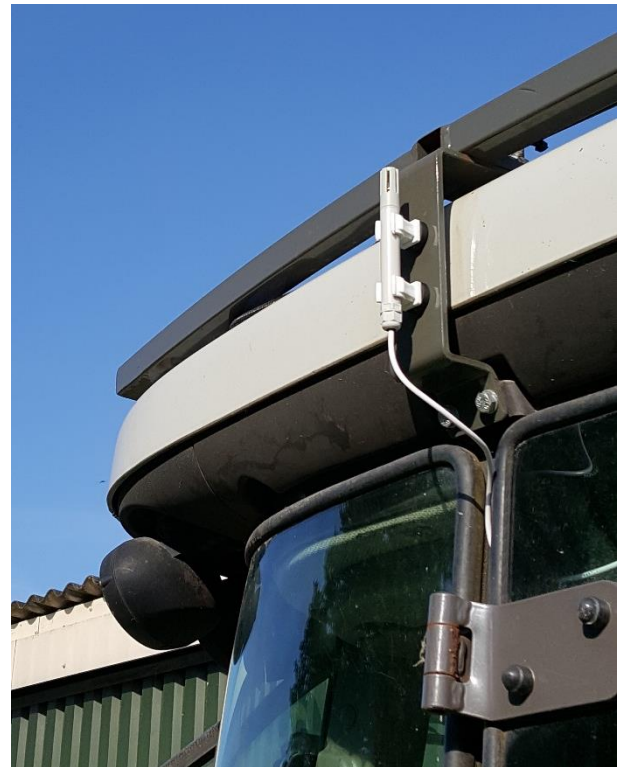


Figure 1 Weather sensor mounted on the roof of the tractor.



2. Configuration

For the configuration of the weather sensor make sure SBGuidance version 4.3.20 or higher is installed on the Viper 4+ terminal.

Switch on the Viper 4+ terminal and start the SBGuidance Configurator ("Shift + SBGuidance"). Go to *Settings > Machine Selector*. Select the correct machine in the machine selector. Press on the green check mark to confirm the selected machine (Figure 2).

Go to *Settings* and go to *Add-ons*, press on tab *Sensors*. At weather sensor select *Aviosys USB 8871* and select *COM7* at Port (Figure 3). Save the settings by pressing on the diskette at the right bottom of the screen. Press on *Setup udev rules for sensors (Viper 4+)* on the left bottom of the screen. The message *Done!* shows up. Press OK. Save the settings by pressing on the diskette at the bottom right. Close the Add-ons page and the SBGuidance Configurator.



Please note!

Important to save the settings in the *Sensors* tab!



Please note!

The settings of the weather sensor are saved per machine profile. If you want to use the weather sensor on multiple tractors you have to configure the settings for multiple tractors.

Reboot the system before continuing.

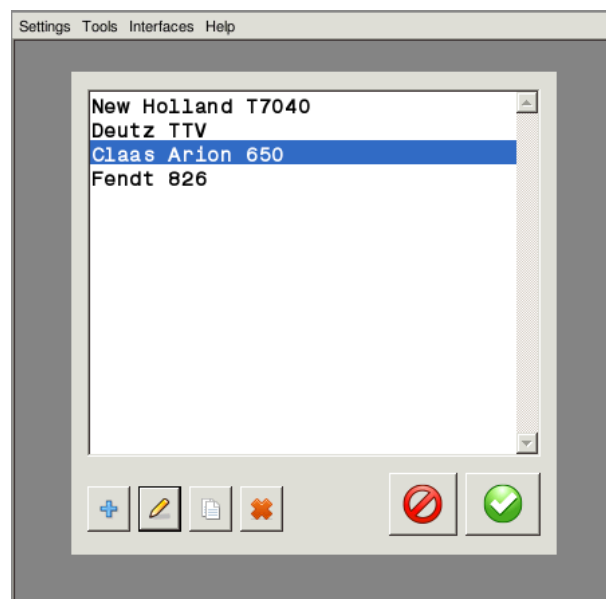


Figure 2 Machine selector.

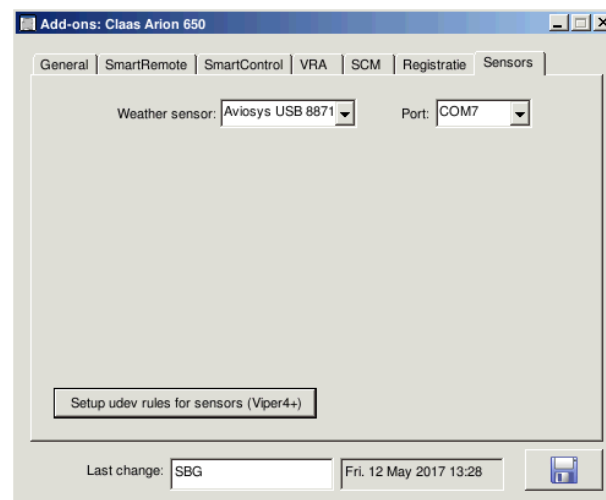


Figure 3 Add-ons tab Sensors.



3. Operation

Start SBGuidance from the start-up screen.

Go to *Info* and on the right side to *OUTDOOR SENSOR*. In this screen the actual temperature and humidity are displayed (Figure 4).

The temperature and humidity can also be shown in a field map. Load a field or create a new field. During operation the sensor will automatically measure and log temperature and humidity. Go to *Info > Field > Map* to see the created temperature and humidity maps. On the left bottom side you can select which map you would like to show (Figure 5).

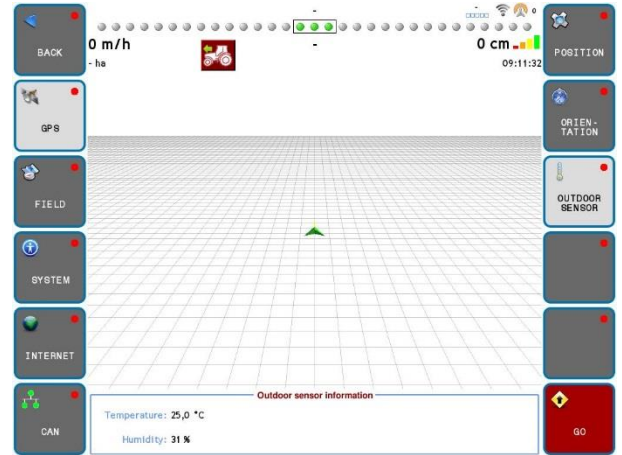


Figure 4 Outdoor sensor information.

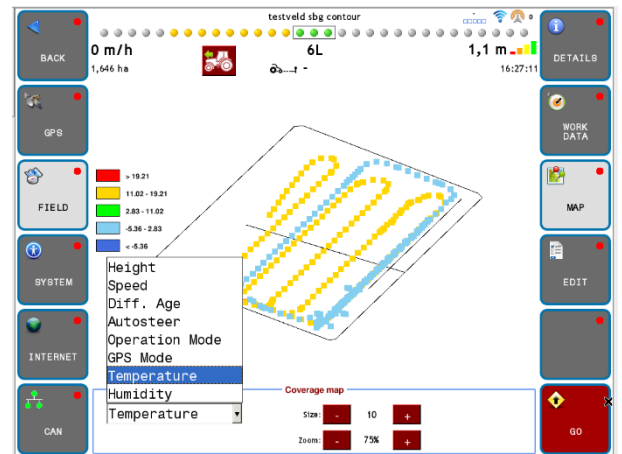


Figure 5 Temperature and humidity map.