

Hold 3 seconds to exit program

Speed: 0 m/h, 0,000 ha

Treated Area

Light bar (press to change resolution)

Distance to track: 0 cm

Internet connection (blue = internet)

GPS Quality (no GPS, GPS only, EGNOS)

20:20:01

EXIT

FIELD

REGISTRATION

SETUP

INFO

ZOOM IN

ZOOM OUT

Record A-B (if Section Control button = green)
Load A-B (if Section Control button = red)

Section controller
Do you want to clear the existing overlap data?
YES NO

Erase existing overlap data

FIELD BOUNDARY

Start Boundary recording (green = recording)

SECTION CONTROL

Enable Section Control (green = section control enabled)

GO

Optional: Activate automatic steering (green = auto steering)

Section status (green = activated)

Section status (blue = spraying)

Untreated Area

Field name

Total Field Area: 0,40 ha / 1,67 ha

Home land

Track nr.: 1

14,6 m

22:25:20

Z BACK

ZOOM IN

ZOOM OUT

Change between 2D / 3D view (tab screen to toggle between 2D and 3D view)

FIELD BOUNDARY

Start Boundary recording (green = recording)

SECTION CONTROL

Track width (press to change)

GO

Create field

Record A (green = recorded)

Record B (green = recorded)

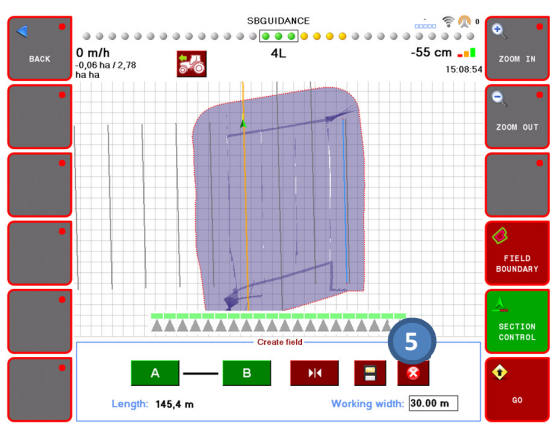
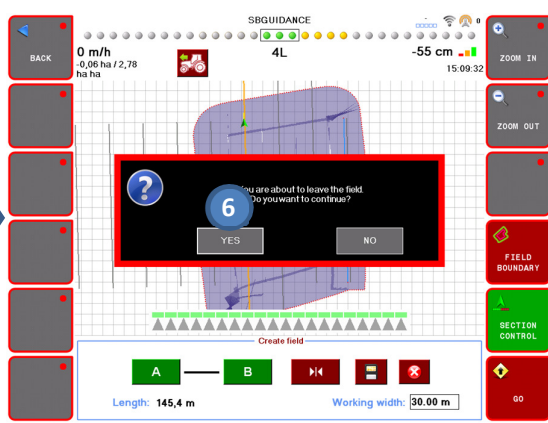
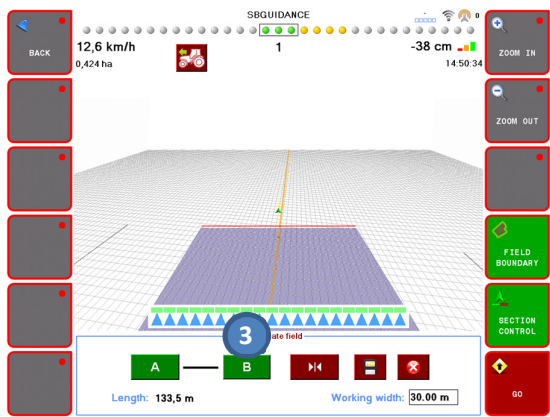
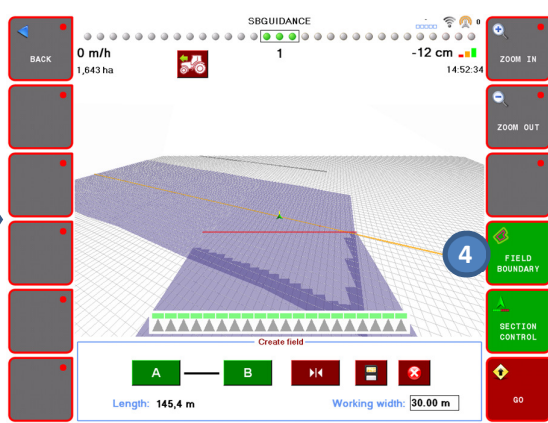
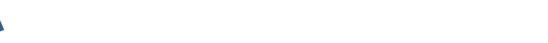
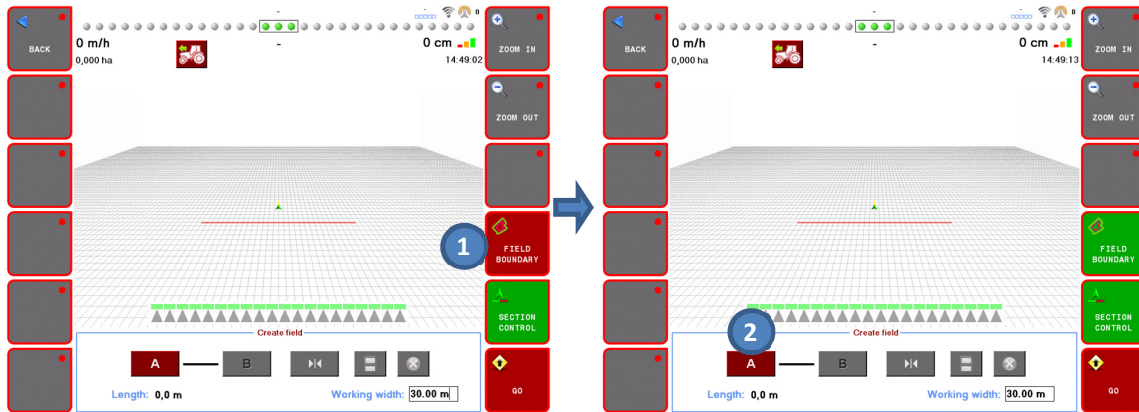
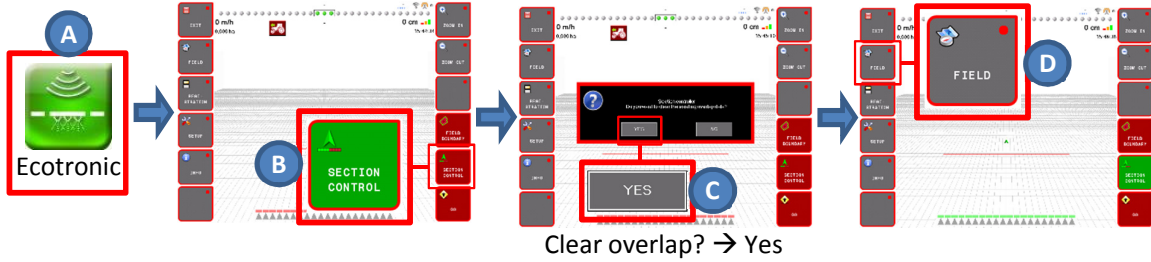
Length: 62,9 m

Working width: 34,00 m

Leave Field (Clear track lines)

Save Field (Tracks and overlap data)

Center Track lines under sprayer



Repeat 1 → 6 for every new field

Leave field? → Yes
Clear overlap? → Yes