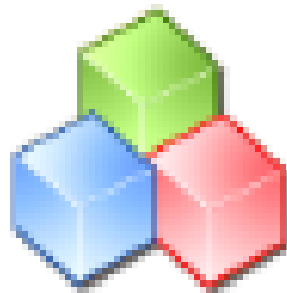




SBG PRECISION FARMING

User Manual Field Manager

24-9-2012



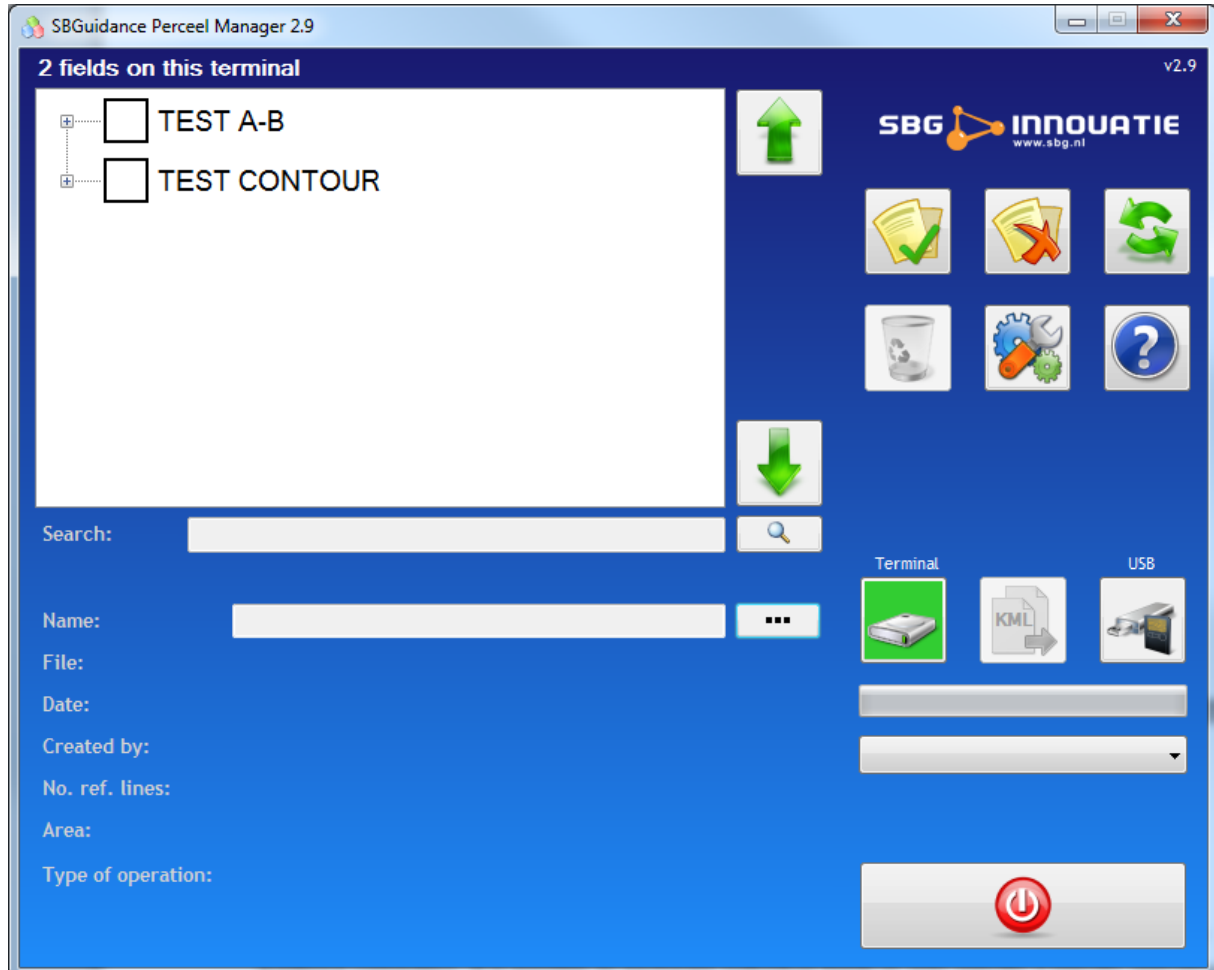
This user manual describes how to use the SBGuidance Field Manager. All functions are described and explained.

1 Inhoudsopgave

1	Inhoudsopgave	1
1	Introduction:.....	2
2	Installation.....	2
2	Usage of the field manager	3
2.1	Main overview	3
2.2	Configuration screen	5
2.3	Searching through field/operation list	6
2.4	Detailed field/operation information.....	7
3	How to	8
3.1	Import/export fields/operations from other SBGuidance terminals.....	8
3.2	Import, export or update already stored fields/operations.....	9
3.3	Import/export 3th party field/operation data	10

1 Introduction:

With the SBGuidance Field Manager it is possible to exchange the already made fields from other guidance computers. It is possible to exchange individual fields or only a specific operation made at a specific field.



2 Installation

(only for dealers)

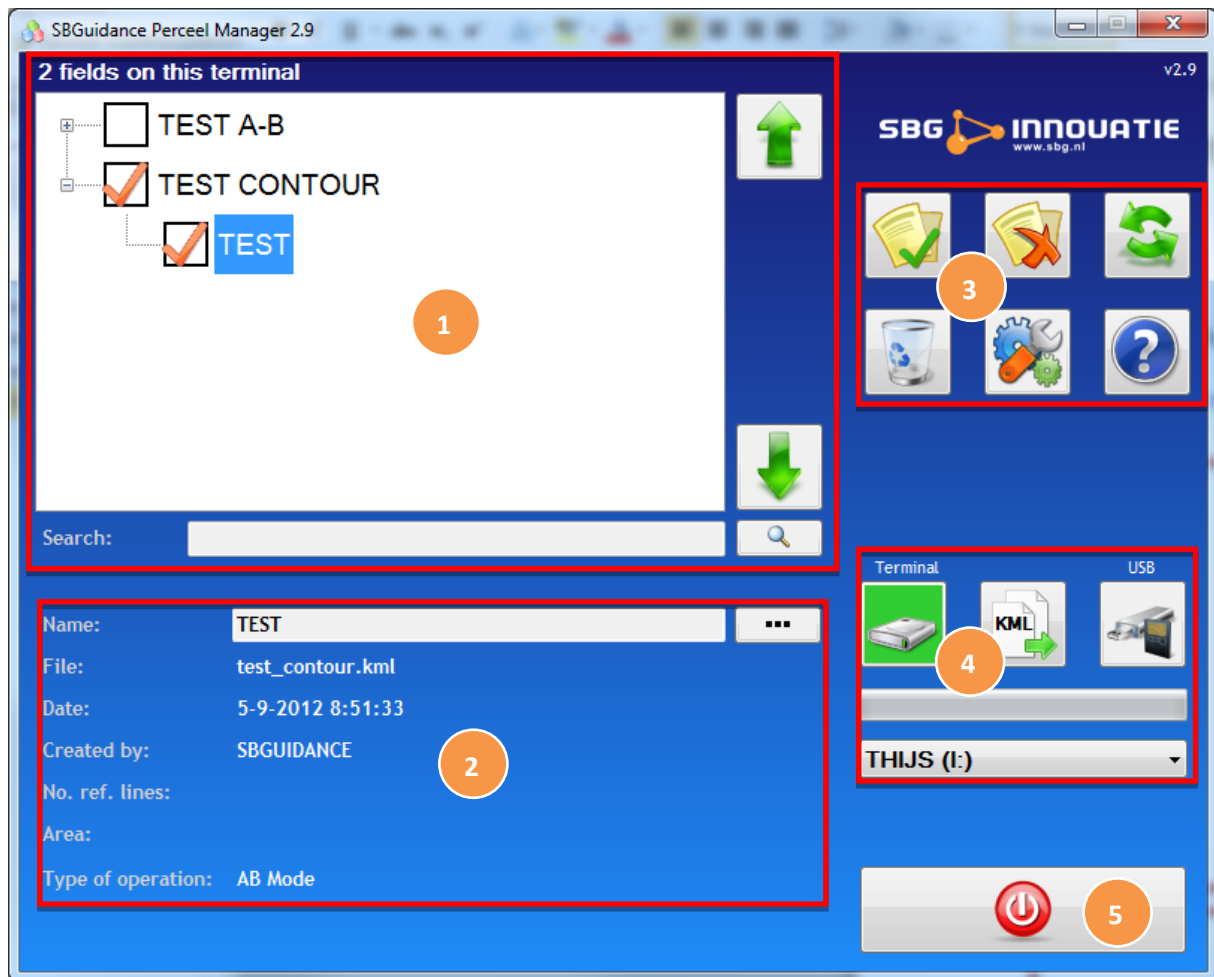
To use the SBGuidance Field Manager it is necessary the .NET Framework 2.0 or higher is installed at the computer.

Updating the version already installed at your computer is possible. Just execute the newer version installation. The older program files will be overwritten and the new version is ready to use. So it isn't required to de-install the older version.

The SBGuidance Field Manager will be installed at the following directory: "*C:\Program Files\SBGuidance Perceel manager*" Than it can be added to the SBGuidance Loader. How to do this is explained at the SBGuidance loader manual.

2 Usage of the Field Manager

2.1 Main overview



- 1 In the upper left corner a list of the available fields and operations at the selected device, terminal or storage device, is shown. If a field is selected, all the saved operations are unfolded and shown. With the arrows at the right side of the list it is possible to scroll through all the stored fields. Underneath the list a search bar is displayed to quickly search through all fields and operations.
- 2 Name, date and all other information about the selected field or operation is shown at the maintenance screen. At the name field it is also possible to rename the name of the field or operation.

3 At the right side of the screen action buttons are shown. The buttons have the following functionalities:



Select all fields displayed at the list



Delete selected fields/operations



Deselect all selected fields



Open the configuration screen



Refresh the field list



Open the help screen.

4 The devices and import/export field. Here the selection is made from which location the fields in the field list are shown. The buttons have the following functionalities:



Show and organize the fields located on the terminal



Show and organize the fields located on an external storage device



Export the fields located on the terminal to an external storage device, button is shown when the the “terminal” button is selected.




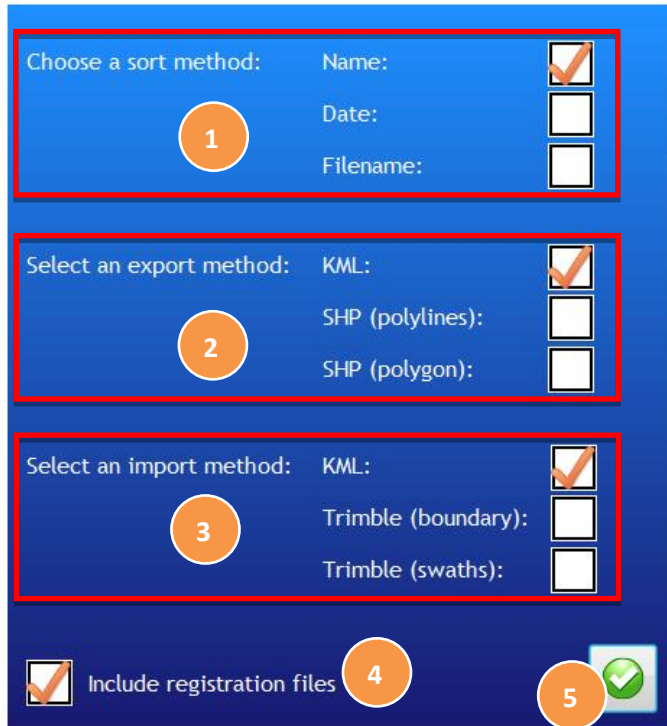
Import the fields located on an external storage device, button is shown when the “external storage device” button is selected.

5 The exit button to close the field manager

2.2 Configuration screen



When the  button is pressed at the main screen, the configuration screen will be opened. At this screen a user is able to setup some options for importing, exporting and the way of sorting the fields.



The screenshot shows a configuration screen with the following elements:

- 1**: "Choose a sort method:" section with options: Name: , Date: , and Filename: .
- 2**: "Select an export method:" section with options: KML: , SHP (polylines): , and SHP (polygon): .
- 3**: "Select an import method:" section with options: KML: , Trimble (boundary): , and Trimble (swaths): .
- 4**: "Include registration files" checkbox, which is checked.
- 5**: A green checkmark button in the bottom right corner.

1 An sort method can be chosen. The field list can be shown sorted by name, date, or filename.

2 An export file type can be chosen. The fields will be exported to the selected file type. The SBGuidance field can be imported at other SBGuidance computers or computers from third-party GPS suppliers.

- KML is a Google format used by SBGuidance to save the field data. This file also can be imported into Google Earth to show the field properties or other registrations.
- SHP(polylines) is a shape file with the operation data used by suppliers as Trimble or Topcon.
- SHP(polygon) is a shape file with the field data used by suppliers as Trimble or Topcon.


3 An import file type can be chosen. The fields on an external storage device can be imported to the SBGuidance terminal.

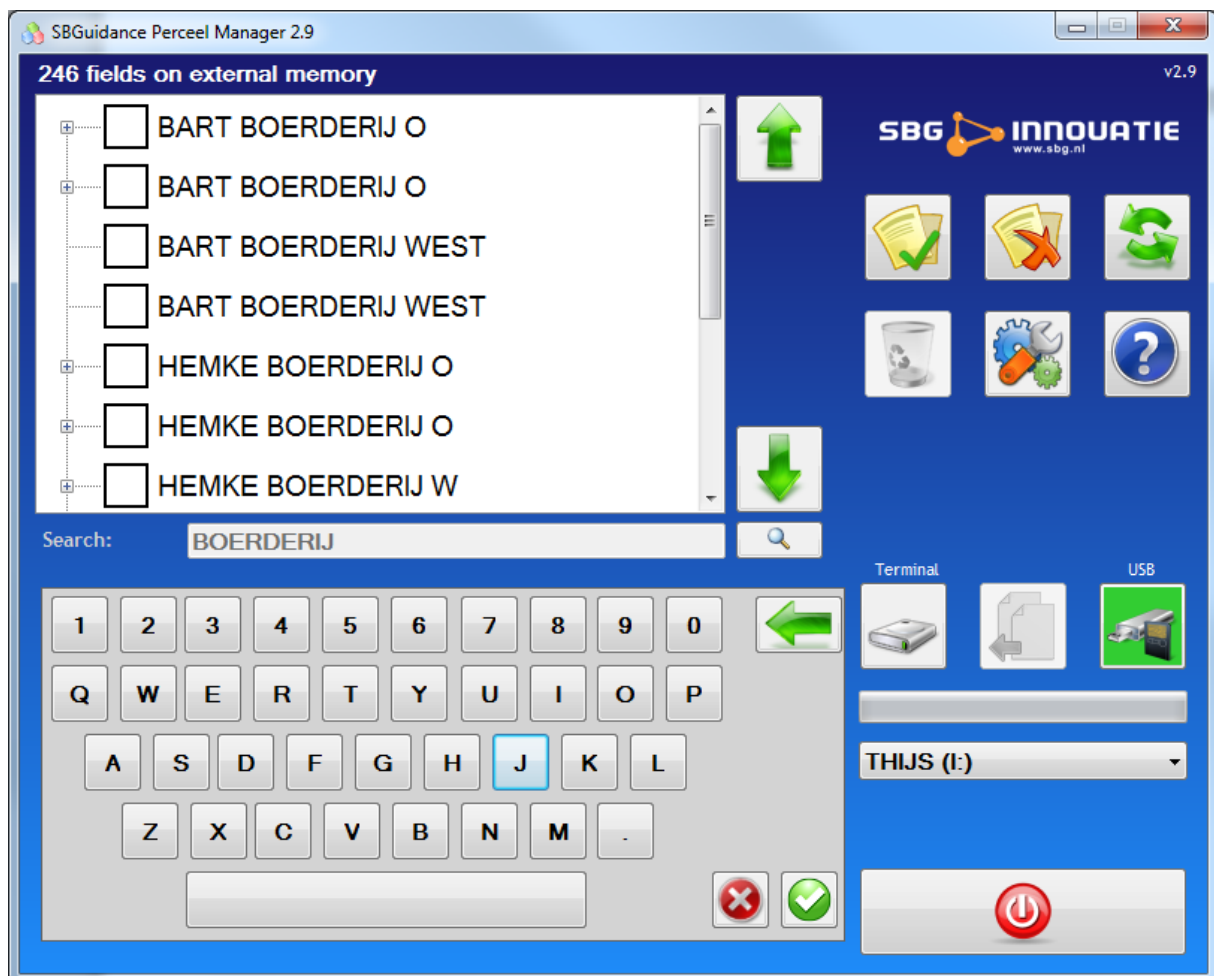
- KML is the standard file format used by SBGuidance.
- Trimble (boundary) format is the file in which Trimble field boundary data is saved. When this option is selected, Trimble boundary fields can be imported into the SBGuidance system.

- Trimble (swaths) format is the file in which Trimble swaths or AB-line data is saved. When this option is selected, Trimble swaths can be imported into the SBGuidance system.



- 4 By enabling the “include registration files” option, extra field data such as field height and task registration is exported and imported too.
- 5 Pressing this button will save the settings and leave the configuration window.

2.3 Searching through field/operation list

Pressing this  button a keyboard will be shown.



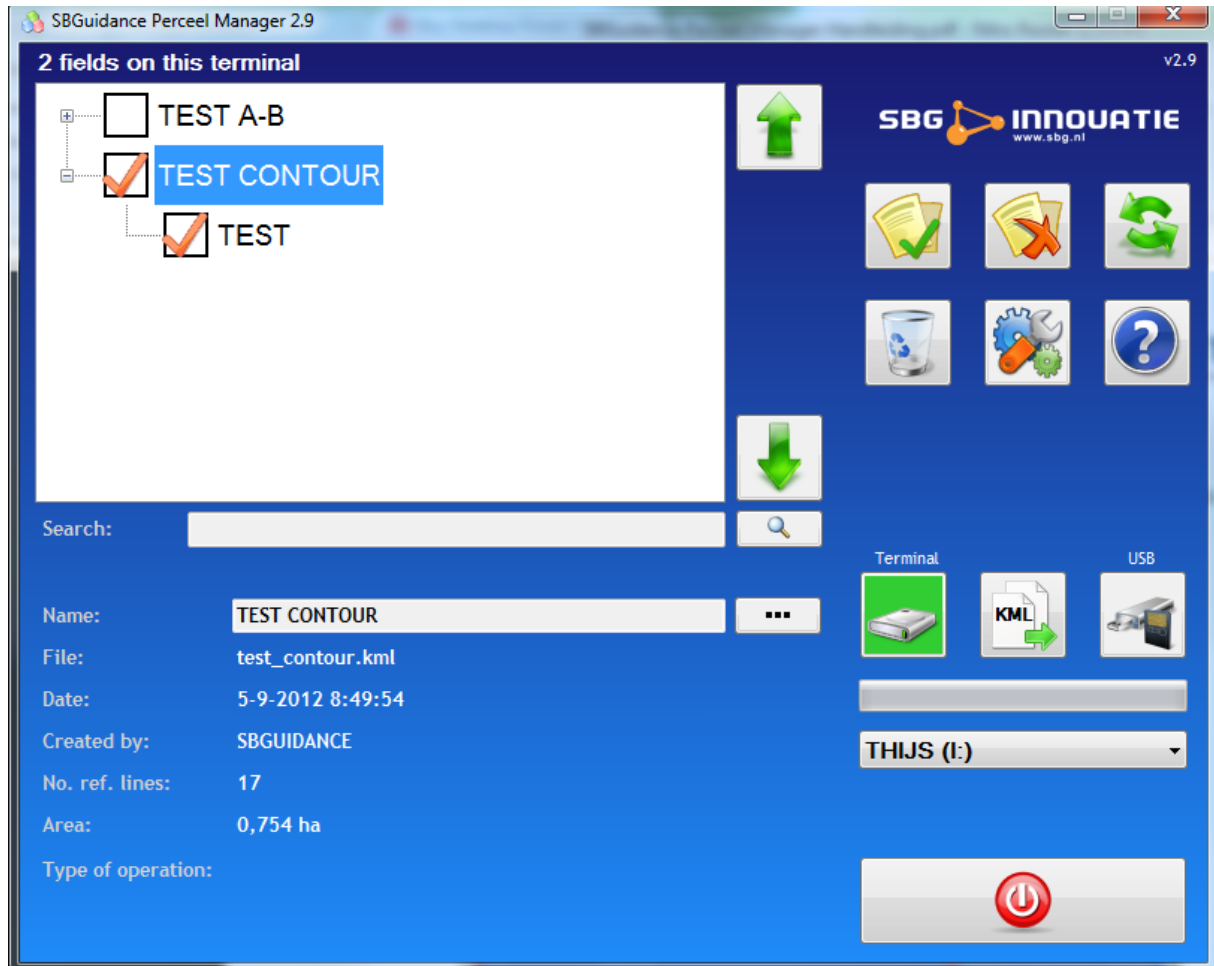
The name of a field or operation can be typed, at the list there will be searched for matches at the field name. The list will be filtered with the matching field names, the keyboard is fully normally operational just like a normal keyboard. The green arrow is the backspace key.

Pressing the  will keep the search job and will show the normal main screen again. Pressing the  button, the search job will be deleted and the normal main screen will be shown again.


Searching can be done at the terminal as well at an external storage device.

2.4 Detailed field/operation information

At the main screen detailed information about a selected field or operation is shown. By selecting a field, the name will be blue shaded, detailed information about the field or operation is shown.

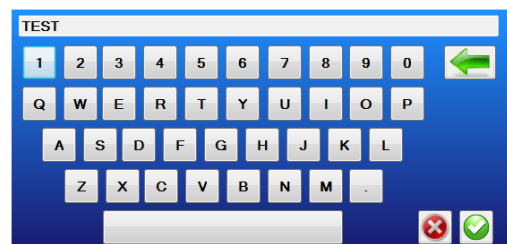


- Name: The name shown at the terminal.
- File: The file in which the data about the field is stored.
- Date: The date when the field/operation is added/created.
- Created by: The name of the user which created the field/operation
- Number of referential lines: The number of lines where the field consists of.
- Area: The total surface area of the field (contour needed)
- Type of operation: Type of operation (AB mode, curve, contour)

It is possible to change the name of the field/operation by pressing the  button. A keyboard will be opened and the name can be changed. The keyboard is fully normally operational just like a normal keyboard.

The green arrow is the backspace key. Pressing the 

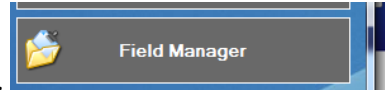
will keep the changed name. Pressing the  button, the changed name will be undone.



3 How to

3.1 Import/export fields/operations from other SBGuidance terminals

1. Insert an External storage device with fields on it into the SBGuidance terminal

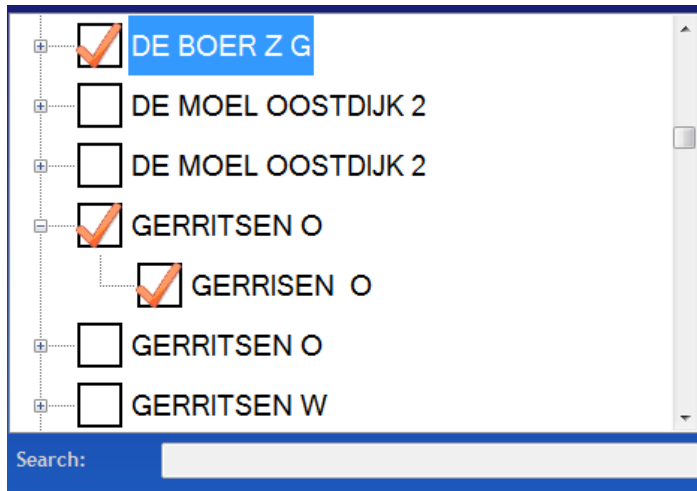


2. Start the field manager in the SBGuidance loader.

3. Select the external device button



4. Select the field/operations you want to import.



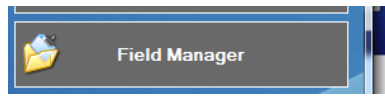
5. Press the import button




6. The fields will be imported, message "Copy completed" will be shown.

3.3 Import/export 3th party field/operation data

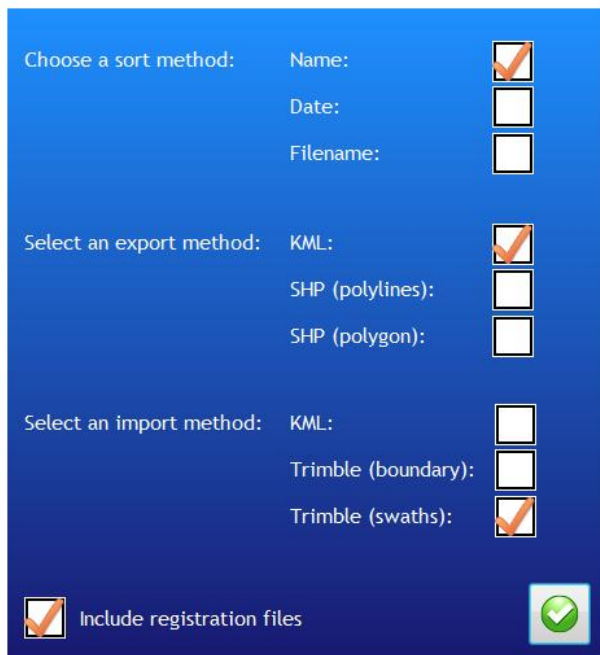
1. Insert an External storage device with fields on it into the SBGuidance terminal.



2. Start the Field Manager in the SBGuidance Loader.

3. Open the configuration window .

4. Select at the import/export part Trimble (boundary)/Trimble(swaths) or SHP(polylines)/SHP(Polygon).



Choose a sort method:


Name:	<input checked="" type="checkbox"/>
Date:	<input type="checkbox"/>
Filename:	<input type="checkbox"/>


Select an export method:


KML:	<input checked="" type="checkbox"/>
SHP (polylines):	<input type="checkbox"/>
SHP (polygon):	<input type="checkbox"/>

Select an import method:

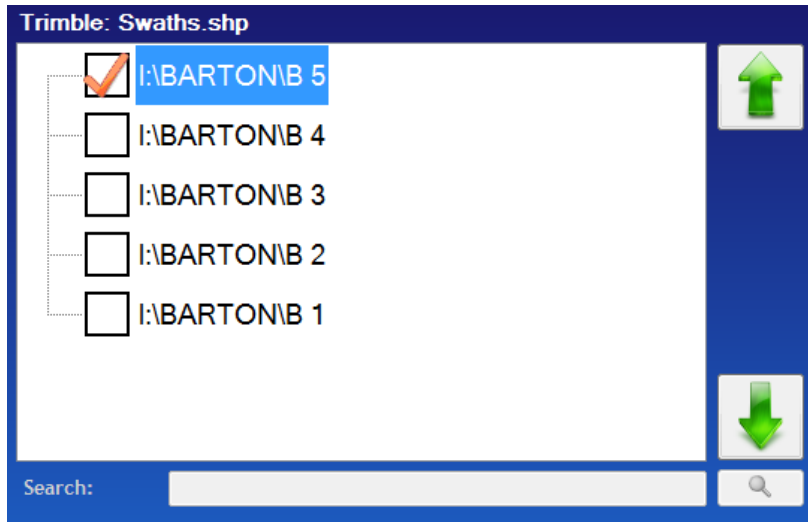
KML:	<input type="checkbox"/>
Trimble (boundary):	<input type="checkbox"/>
Trimble (swaths):	<input checked="" type="checkbox"/>


Include registration files 

5. Save the configuration by pressing the  button

6. Open the field/operation data stored at the external storage device pressing the  button.

7. Select the field/operations you want to import.



8. Press the import button .
9. The fields will be imported, message "Copy completed" will be shown.