



USER MANUAL
(ENGLISH) (TRANSLATED)

SBGuidance 4.x.x

WiFi Manager

016-8000-006EN Rev. A



Performing perfection.



Preface

Preface

This operating manual is intended for those persons who are competent to operate the SBGuidance software. The operating manual contains important information and instructions that must be complied with when setting up, operating and servicing the SBGuidance system. This operating manual must therefore be read and understood by competent persons BEFORE the system is set up and must always be kept in the close vicinity of the machine.

The greatest possible care has been taken in the compilation of the manual. However, SBG Precision Farming accepts no liability for any errors or incomplete information contained in this document.

Remarks or queries can be submitted to:
service-eu@ravenind.com.

Neither SBG Precision Farming nor any of its suppliers may be held liable for any injury or damage to property that may arise from the use of the system SBGuidance System.

The installed SBG systems produces less than 70 dB.

In this manual several terms are used that are intended to draw attention to particular aspects of the SBGuidance System and its operation.

**Tip:**

Provides recommendations on how certain activities can be performed much easier.

**Please note!**

Indicates certain problems that the user should take note of.

**Caution!**


Indicates that the machine can be damaged.


**Warning!**


Indicates a risk of injury.





Disclaimer


-  **Warning!**


The safety instructions contained in the operating manual of the tractor or the machine must be complied with at all times.
-  **Warning!**


It is strictly forbidden to use the SBGuidance system on public roads.
-  **Warning!**


It is strictly forbidden to leave a machine being operated with or without the SBGuidance steering system activated.
-  **Warning!**


In order to prevent personal injury or fire, defective or blown fuses may only be replaced by fuses of the same type and amperage.
-  **Warning!**


The SBGuidance steering system is not capable of identifying and avoiding obstacles. Any obstacles along the driving path must be avoided by the driver.
-  **Warning!**

Only allow authorised persons to operate the system. Authorised persons include: Persons who have read and understood the operating manual and who are both physically and mentally fit to operate the system.
-  **Caution!**

Always start the machine first, before activating the SBGuidance steering system in order to prevent the occurrence of a peak voltage.
-  **Caution!**

Only touch the touch-screen with your finger or with a special touch-screen stylus. Sharp objects may cause irreparable damage to the touch-screen.
-  **Caution!**

Only clean the screen using a damp cloth. Never use caustic or other aggressive substances.
-  **Please note!**

If the terminal is not used for a long period, better remove the terminal from the tractor and store in a heated environment. This will extend the life span of the electronic components.
-  **Please note!**

To prevent theft, it is better to not let the terminal and GPS-antenna unattended in the tractor on the field.

Content

Preface	3
Disclaimer	4
Content	5
1. Introduction	7
2. Setup	9
2.1. Antenna.....	9
2.2. Connect to a WiFi network.....	10
2.2.1. Switching network.....	12



Introduction

Intentionally left blank.

1. Introduction

SBGuidance WiFi Manager is the application where the user can make an internet connection through a WiFi network or a mobile hotspot. As a result, the user can use the weather forecast function, the terminal can be updated online and the service department can help the user via remote support.



Introduction

Intentionally left blank.

2. Setup

To make an internet connection to a WiFi network, a number of steps are required.

2.1. Antenna

At a GeoStar terminal, the WiFi dongle must be connected (Figure 1).

At a Viper terminal, the WiFi antenna must be connected (Figure 2).

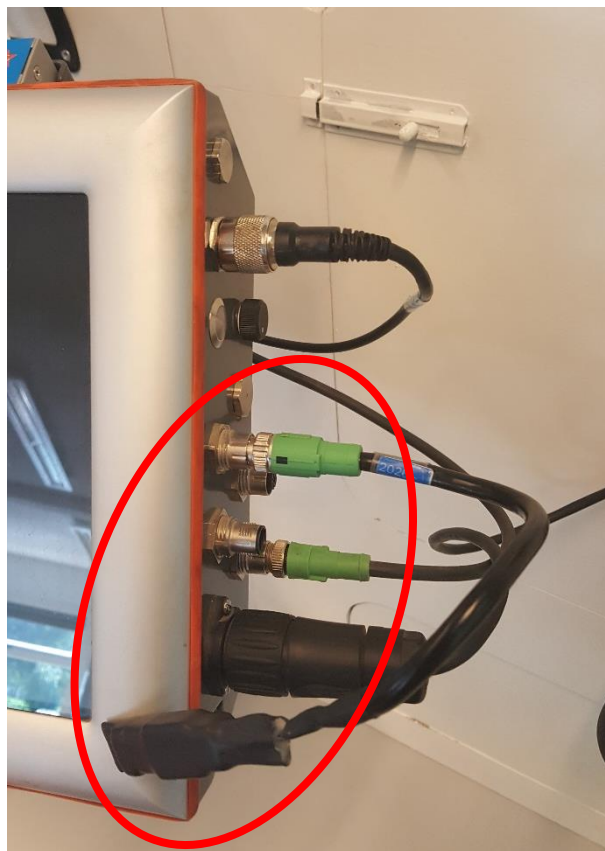


Figure 1 WiFi dongle connected.



Figure 2 WiFi antenna connected.



Introduction

2.2. Connect to a WiFi network

Make sure there is a WiFi network nearby the terminal.

Go to the WiFi Manager by pressing the button in the SBGuidance Loader (Figure 3).

If the Wifi manager is not installed on your terminal, please contact your SBG dealer.

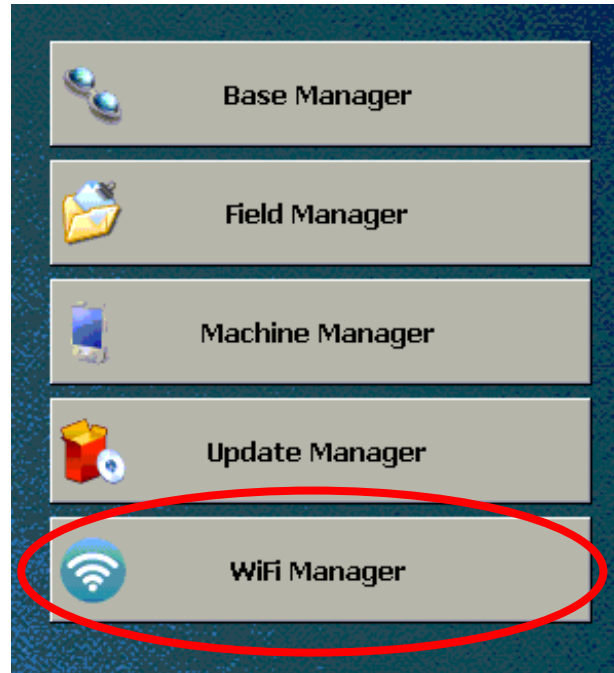


Figure 3 WiFi Manager button.

A new screen opens (Figure 4). The left side of the screen shows the available WiFi networks. The percentage indicates how large the signal strength of the WiFi network is. The higher the percentage, the better the signal.



Tip:

If no WiFi network is in the list make sure you are nearby a network or try to refresh the WiFi network list by pressing on the button with the two arrows at the right side of the screen.

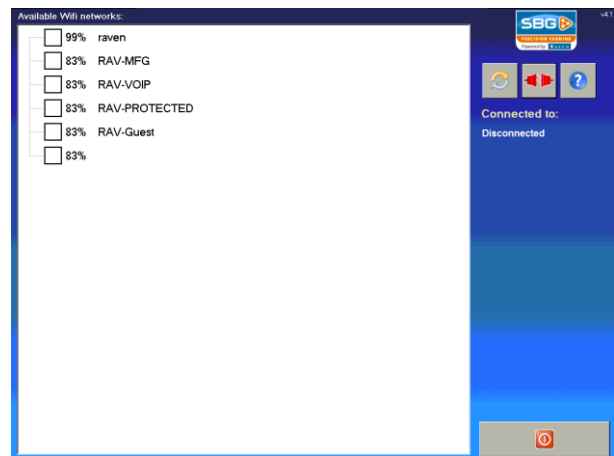


Figure 4 WiFi Manager.

Introduction



Select a WiFi network and press the button with the two red connectors (Figure 5). A screen will open where the password of the WiFi network must be entered.

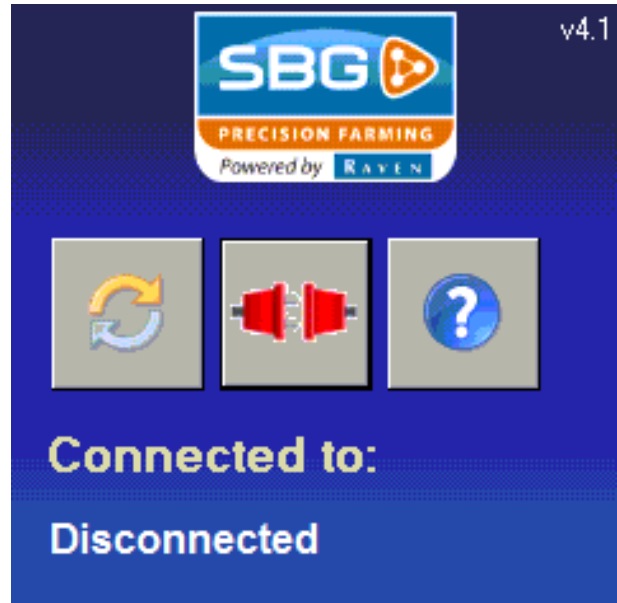


Figure 5 Connect button.

Enter the password and press the green checkmark (Figure 6). The system will now attempt to connect to the network.



Figure 6 Entering password WiFi network.

If the connection is successfully established, the network name will appear after "connected to". The red connector button has become green and the status "Online" appears on the screen (Figure 7).

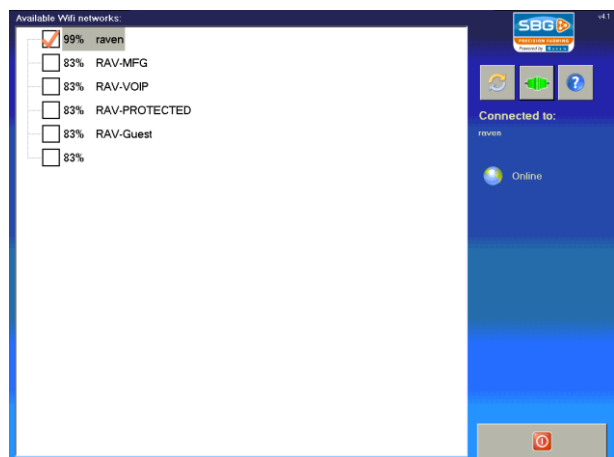


Figure 7 Connected with WiFi network.



Introduction

Exit the screen by pressing the exit button at the bottom right of the screen (Figure 8).



Figure 8 Exit button.

2.2.1. Switching network

To switch from WiFi network, the following steps must be taken. Select another network and press the button with two red connectors. The connection with the old network will be automatically disconnected. Enter the password of the new selected network and press the green checkmark (Figure 6). The system will now attempt to connect to the new WiFi network.



Tip:

If one of the used buttons in the WiFi Manager is unclear press the question mark button at the right side of the screen for more information.



Introduction



Intentionally left blank.

The logo for SBG, featuring the letters 'SBG' in a bold, white, sans-serif font on a blue background. To the right of the text is a stylized orange and white icon consisting of three interconnected nodes forming a triangle.

PRECISION FARMING

Powered by **RAVEN**

An aerial photograph of a large agricultural field. The field is filled with rows of young green plants, likely seedlings, spaced evenly across the land. The rows recede into the distance, creating a strong sense of perspective. The sky above is a clear, vibrant blue, dotted with soft, white cumulus clouds. The overall scene conveys a sense of organized, modern farming.

SBG precision farming

Hoornseweg 22
1775 RB Middenmeer
Nederland

Email: info@sbg.nl

Web: www.sbg.nl

Tel: +31 (0)227 54 93 00

Performing perfection.